



DeTaSECURE

# Data & Asset Protection Program

Every business, knowingly or without knowing has a certain amount of data exposed in public.

We fix that! and improve your data protection without any resistance to your business continuity.



# WHO ARE WE?

We are accomplished cyber security experts, with industry experience in leadership roles in enterprises PwC, PayPal, Walmart, Thoughtworks and EY, taking care of cyber security practices and global delivery in sectors like web3, finance, e-commerce, healthcare, insurance and telecom domains. We help companies in discovering their exposed data over the Internet. Post analysis, we score them on the basis of their existing security frameworks and recommend ways to improve their overall security posture. We also provide a threat protection program to make companies ready for any unforeseen future attacks.

## Our Clients



## Certifications



## Conferences



# Data & Asset Protection

With DeTaSECURE, safeguard your vital infrastructure against online attacks, enhance internal security procedures, and adhere to legal requirements. The tight cyber security provided by our Cyber Asset Protection Security Subscription program's best practises demonstrates that the security of your assets is our first focus as we create and deploy our technologies.

## Asset Monitoring

Discover and monitor publicly exposed digital assets. Detailed overview of asset inventory.

## Exposure Analysis

- The Exposure Assessment is based on analysis of Sensitive information gathered from the Black markets, hacker groups, and data breach sources that are openly accessible. Source Code Exposure
- checking public repository for leaks of source code, projects, keys, and copyrighted code violation.

## OSINT and Dark Web Analysis

Dark Web Analysis is an identity theft prevention process used by Detasecure security experts to monitor organization's secret information on the dark web and alert organization if it is discovered there. This will enable you to mitigate the effects of a data breach and take the required precautions to safeguard your company, employees, clients, and other assets against a prospective assault.

## Data Breach Detection

Monitor Internet, forums, Social media groups and community, dark web for data leaks and take immediate actions.

## PCI/PII Data Exposure Analysis

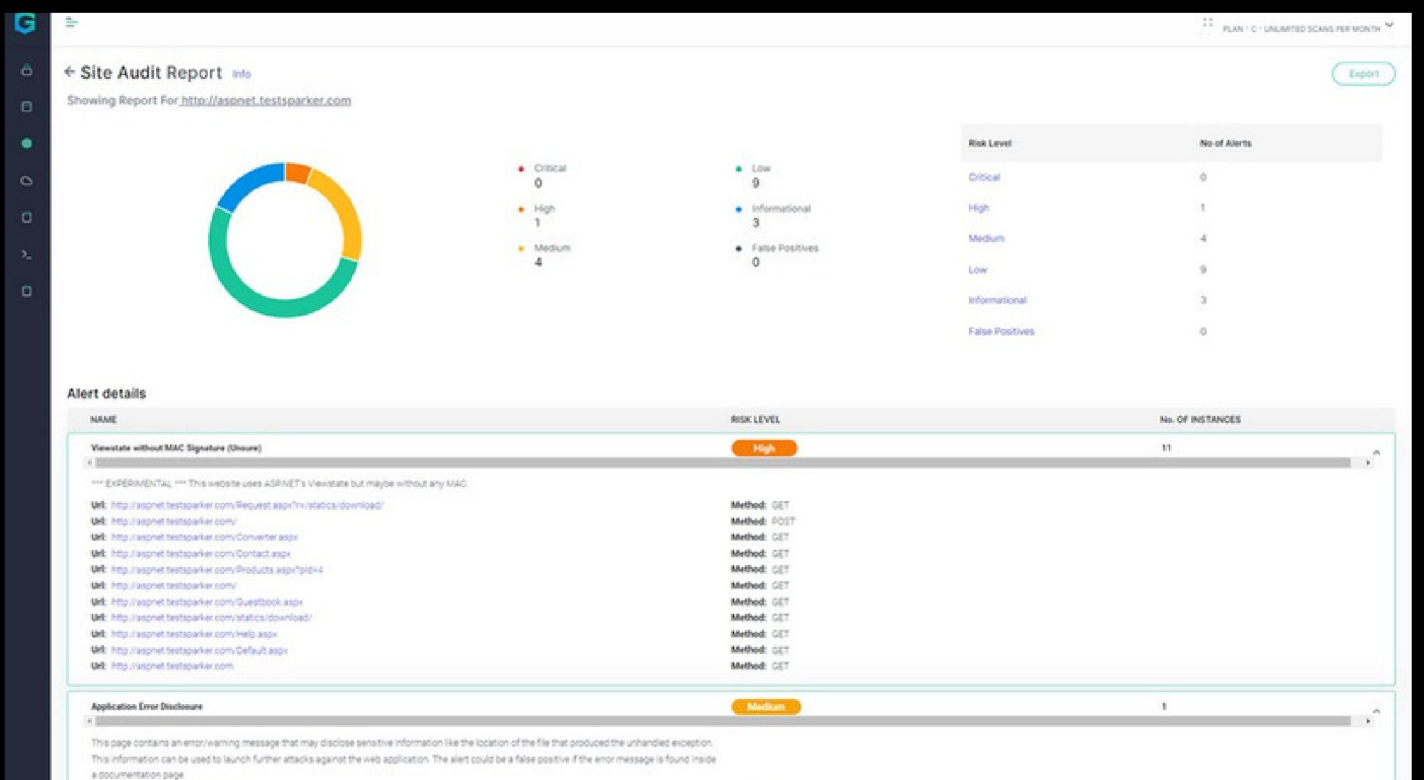
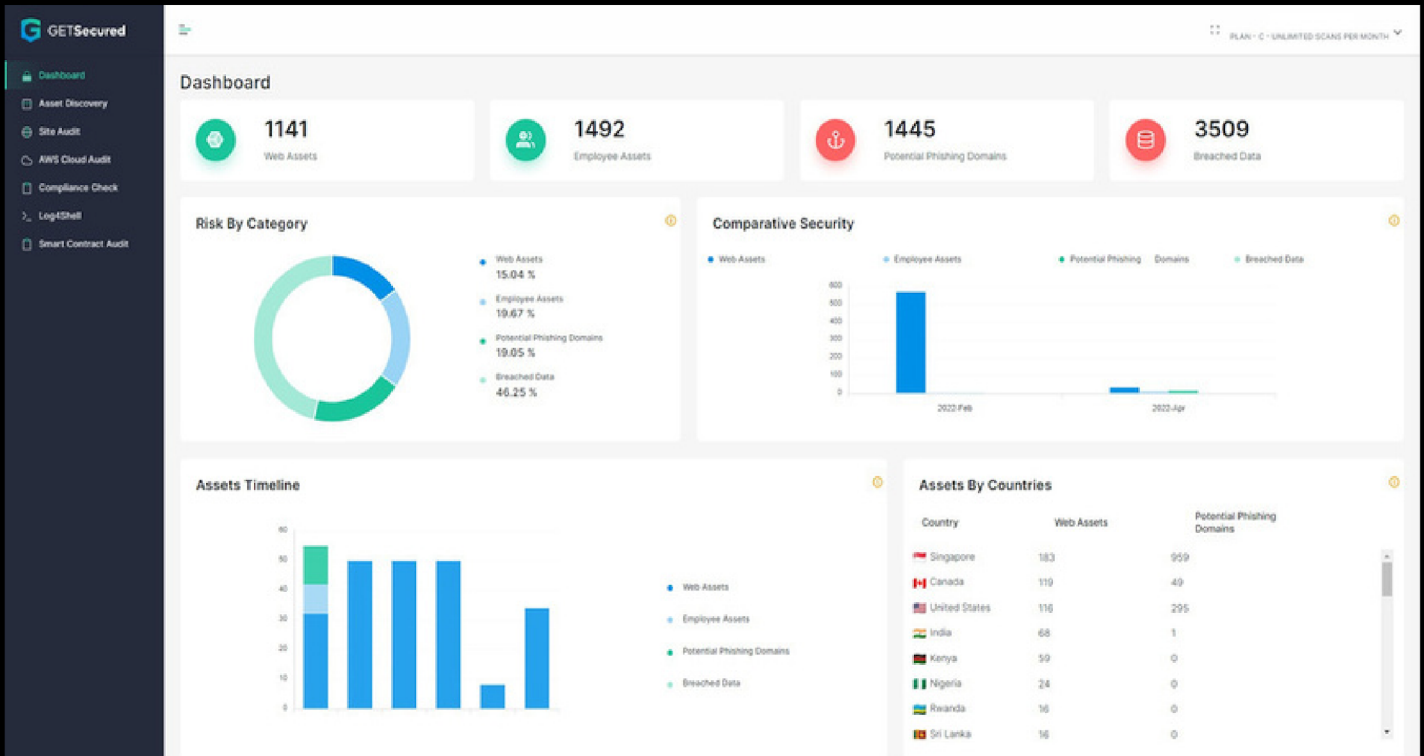
An increase in the use of PII has attracted threat actors who use vulnerabilities to acquire sensitive data and resell it on the dark web. Detasecure analyze these exposures and provide insights into the extent and patterns of threat actors sharing PII, which can be later used for prediction and prevention.



# Automate Data & Asset Protection With



**Demo link:** <http://gs-prod-demo-website.s3-website-us-east-1.amazonaws.com/>



# CONTACT US! GET SECURED!



**DeTaSECURE**



**SEND US AN EMAIL**

**[contact@detasecure.com](mailto:contact@detasecure.com)**



**VISIT OUR WEBSITE**

**[www.detasecure.com](http://www.detasecure.com)**



**[contact@detasecure.com](mailto:contact@detasecure.com)**